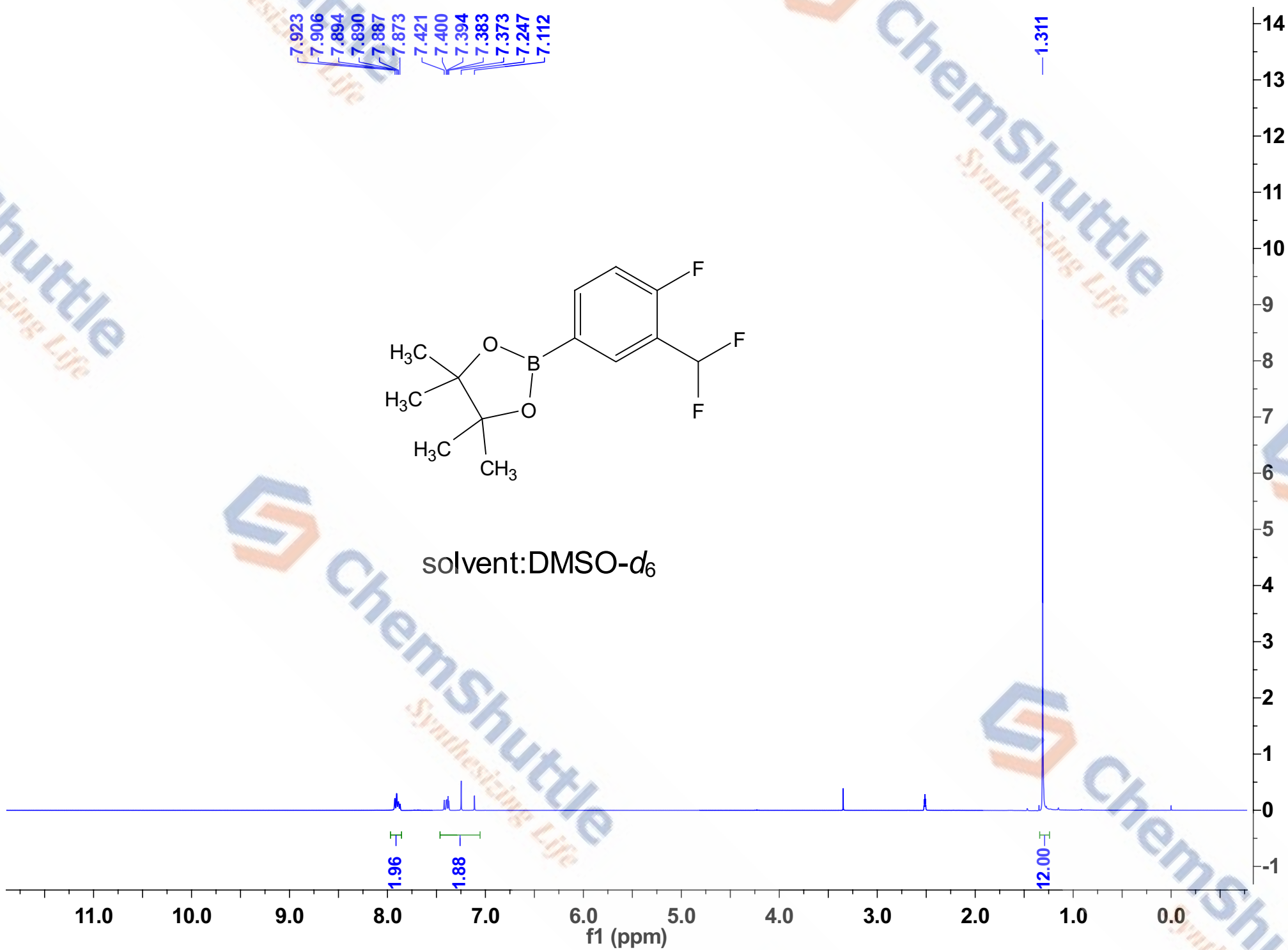
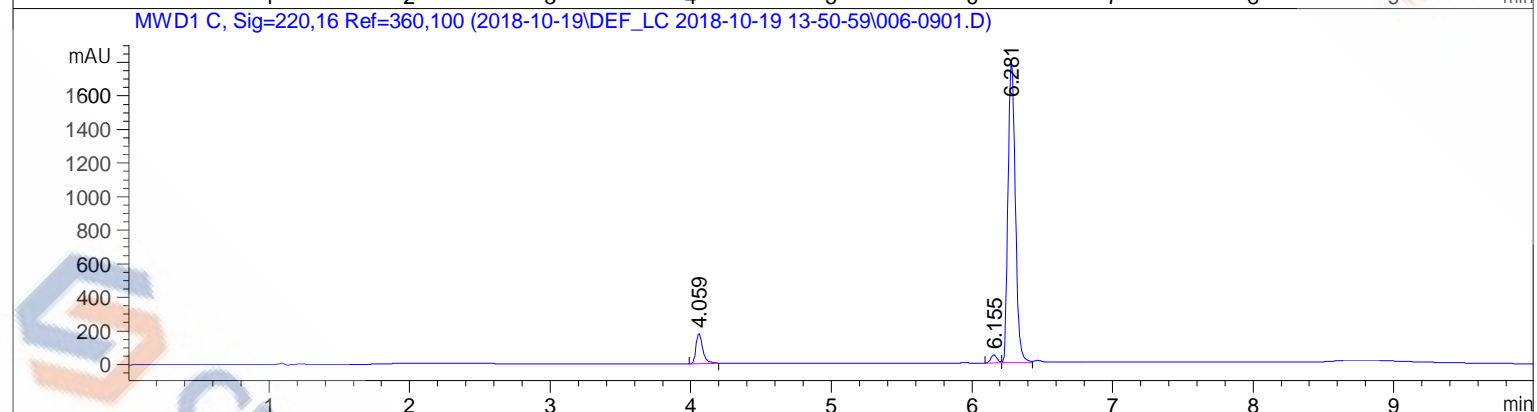
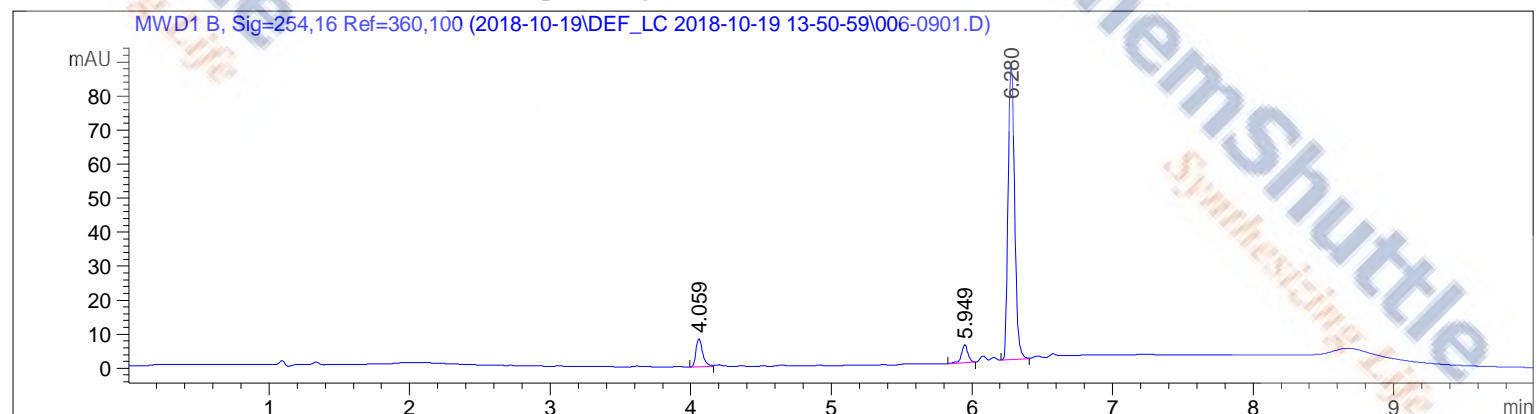


solvent:DMSO- d_6



=====

Acq. Operator	: 131-199-048-SPC03-1031-1-2	Seq. Line	: 9
Acq. Instrument	: Instrument 1	Location	: Vial 6
Injection Date	: 10/19/2018 3:26:27 PM	Inj	: 1
		Inj Volume	: 1.0 µl
Acq. Method	: C:\CHEM32\1\DATA\2018-10-19\DEF_LC 2018-10-19 13-50-59\CHEM_1.M		
Last changed	: 10/19/2018 8:39:48 AM by 131-199-048-SPC03-1031-1-2		
Analysis Method	: C:\CHEM32\1\METHODS\CHEM_1.M		
Last changed	: 10/16/2018 8:47:22 AM by 131-199-048-SPC03-1031-1-2		
Additional Info	: Peak(s) manually integrated		



=====
Area Percent Report
=====

Sorted By : Signal
Multiplier: : 1.0000
Dilution: : 1.0000
Use Multiplier & Dilution Factor with ISTDs

Signal 1: MWD1 B, Sig=254,16 Ref=360,100

Peak #	RetTime [min]	Type	Width [min]	Area [mAU*s]	Height [mAU]	Area %
1	4.059	BV	0.0511	27.53896	8.22474	8.6168
2	5.949	BB	0.0514	16.75652	5.22629	5.2431
3	6.280	BV	0.0487	275.29935	87.55672	86.1401

Totals : 319.59483 101.00775

Signal 2: MWD1 C, Sig=220,16 Ref=360,100

Peak #	RetTime [min]	Type	Width [min]	Area [mAU*s]	Height [mAU]	Area %
1	4.059	BV	0.0518	610.85815	178.84839	8.4877
2	6.155	BV	0.0502	148.53696	47.87667	2.0639
3	6.281	VV	0.0557	6437.58887	1802.96423	89.4484

Totals : 7196.98398 2029.68929

=====
*** End of Report ***